

Employing social care Personal Assistants during the Covid-19 pandemic

Information Sheet

What is this study about?



You are invited to take part in a research study to help us learn about what happened to people employing Personal Assistants during the Coronavirus pandemic.

The research aims to help to improve social care now and in the future.

Why have I been asked to take part?



You have been invited to take part because you employ a Personal Assistant (care worker) to support you.

Why are we doing this research?



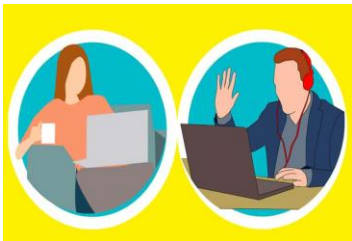
The Coronavirus pandemic has been hard for many people using social care. Learning about what happened to people employing Personal Assistants in this time is important for trying to improve social care now and in the future.

What will I be asked to do?



You will be asked to complete a consent form to say that you agree to take part in the study.

You will be asked to speak to a researcher either by phone or video call. This will last around 45 minutes and we will record our conversation.



The researcher will ask you questions about yourself and your PA, and how you managed during the Coronavirus pandemic.

Do I have to take part?



No. You chose if you would like to take part or not. If you do not want to take part that is fine and will not affect any care or services you get.

What will happen with my information?



All your information will be kept private and safe.

We will record what we talk about, if you say this is okay. The recording will be typed up by another company who will also keep your information private and safe. They will delete the recording and we will keep it stored safely on university laptops.



The only time we would share what you tell us is if the researcher feels worried that you or someone else is at risk of harm. They will talk to you about this before talking to someone who can help, for example a person from your local Adult Social Care Department.

How will the research help me?



You might enjoy talking to the researcher about your experience. You will get a £20 shopping voucher for your time and help with the research. We hope the findings of this research will help people who use social care services now and in the future.

Will I be at risk of harm?



Taking part in the research is safe. There is a small chance that some of the questions we ask you might be upsetting. You can take a break or stop the interview at any time. We will be able to support you if you feel upset from taking part in the research.

What will happen with the findings of the study?



We will use the answers of everyone we speak to in this research to write reports that we will publish. We plan to make a YouTube presentation and other online videos.

How can I see the findings?



The researcher will ask if you would like to see the findings of the research. They will contact you at the end of the study.

You will also be able to see the findings on our website:

<https://www.kcl.ac.uk/scwru/index>

Who is organising the research?



This research is run by Dr Kritika Samsi who works in the National Institute for Health Research (NIHR) Policy Unit at King's College London.

The research is funded by the National Institute for Health Research (NIHR) School for Social Care Research.

What if there is a problem?



If you are unhappy and wish to complain about the research, you can contact Professor Reza Rezavi at King's College London

Email: reza.razavi@kcl.ac.uk

Phone: 0207 8483224

Can I talk to someone before agreeing to take part?



Yes. If you would like to hear more about the research or ask any questions you can contact Monica Leverton:

Email: Monica.leverton@kcl.ac.uk

Phone: 0207 848 1782

My name is Monica. I am a researcher at King's College London University