



WHOSE SHOES?®

MAKING IT REAL



The flexible new tool to support you through your transformation journey, and co-produce local solutions that work for you!

We are really excited about launching this new electronic tool and our innovative collaboration.

'Making It Real' provides the framework for your personalisation journey.

Whose Shoes?® discussions bring the transformation agenda alive in a thought-provoking way:



a powerful tool to trigger 'crucial conversations' to help people understand and engage with the opportunities and challenges of 'Making It Real'



can be used at all stages of your 'Making It Real' journey to help you work across boundaries and co-produce imaginative, local solutions



over 200 real-life scenarios encourage you to challenge attitudes and assumptions and work together for excellence in health and social care...

... ALWAYS with the person in the centre!



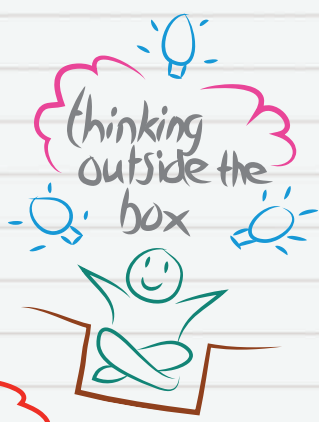
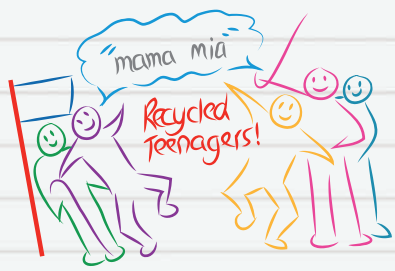
'Whose Shoes?'® – Making It Real' is built around the themes and 'I' statements of 'Making It Real'. It has been co-produced and piloted with a very wide range of groups and organisations. It builds on the success of the original Whose Shoes?'® tool, which is still available as a popular board version.

For further information, please visit www.nutshellcomms.co.uk

"It has never been so timely to remind policy makers, commissioners and the front line staff in Health and Social care organisations that each individual is a precious human being.

Whose Shoes?'® goes a step beyond raising awareness; it engages emotionally as well as intellectually. Gill Phillips' work makes a huge difference; I want professionals everywhere to have a chance to walk in my shoes."

Larry Gardiner, *International speaker and dementia advocate, living with dementia*



www.nutshellcomms.co.uk

 @whoseshoes